



70 x 90 x 66.4mm

Features :

- Compact PLC with built in HMI
- 2 x 8 character LCD
- Real Time Clock
- Windows based User Friendly Software for Ladder Programming HMI Configuration
- RS485 based Communication with MODBUS Protocol
- Serial Printing

Display Specifications

Display	2 x 8 Characters LCD (Yellow Green Backlight & Text Black)
No. of Keys	5 Keys (4 - User Configurable)

Input Specifications

Digital Input	
No. of Digital Inputs	10
Input Type	PNP
Input Voltage Range	5 - 30V DC
Response Time	Typical 2 ms (Based on Ladder Scan Time) & 100 µsec for Fast Input
Isolation Between Power supply & Inputs	Yes
Isolation Between Input & MCU	No
Debounce Time	0 to 255 ms (Default 10 ms)
Timer Accuracy	0.1% or 2ms (Whichever is greater)
Fast Counter Input	
Input Type	PNP
No. of Fast Input Channel	1
Max Speed	5kHz

Output Specifications

Digital Output - Transistor	
No. of Outputs	6
Output Type	Source 100mA each @ 24V DC
Response Time	5 mSec
Short Circuit Protection	Yes
Isolation between CPU & Output	No
Isolation between Output	No
Nominal Load	240E
Breaking Current	110mA

Communication

Communication Port	RS485 [Slave] RS485 [Master]
Communication Protocol	MODBUS RTU
Connector	RJ25 (Slave) Screw Terminal (Master)
Supported Expansion	None
Transmission Mode	Half Duplex
Transmissions Speed	9600, 19200, 38400, 57600, 115200 bps
Parity	None, Odd, Even, Mark, Space
Data Bits	7 or 8
Stop Bits	1 or 2
Settable Slave	1 - 255

Functional Specifications

Programming Method	Windows Based Software for Ladder Programming and HMI Configuration.
Memory	Data Memory : 32 kB Code Memory : 240 kB EEPROM Memory : 1 kB
Max. no. of Objects	2000 (As per Memory)
Minimum Scan Time	200 µsec
Typical Scan Time	2 mSec (Based on Ladder Scan Time)

Environmental Specifications

Temperature	Operating : 0 to 55°C Storage : -40 to 70°C
Humidity (non-condensing)	10% to 95% RH

Mechanical Specifications

Mounting	DIN Rail
Weight	320gm approx

Functional Features

Timer Operational Modes	On Delay, Off Delay, Pulse, Special [Up/Down] Timer, 1ms Timer
Timer Resolution	1 ms (Accurate only for 1 msec Timer block)
Counter	Up Counter, Down Counter, Up/Down Counter, Special [Up/Down] Counter \
Other Blocks	Analog Input, FTC, PIDT, Rampsoak
Memory Retention	10 Years (1 kB)
RTC	Yes
Clock Data Retention	10 Years as 25°C

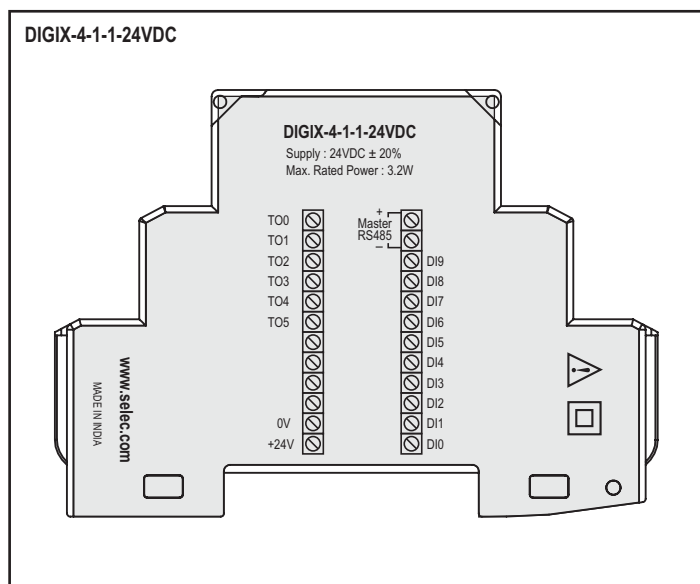
*Usage Limited to 4 No.s

Auxiliary Supply Specification

Supply Voltage	24V DC (18 to 30V DC)
Power Consumption	3.2W
Source	NA

VAR IN_OUT & VAR OUTPUT types Variables Maximum Retention 25 variables only each of 32 bit @ 24VDC

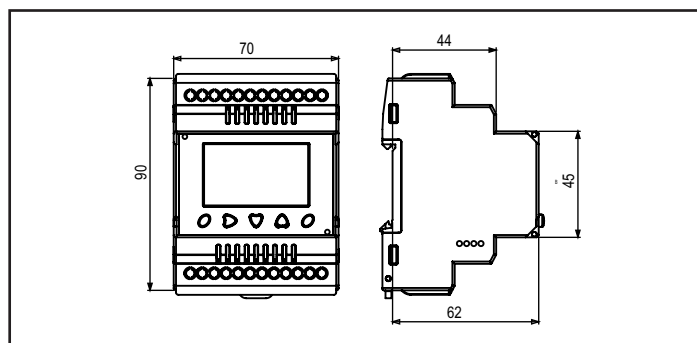
Terminal Connections



Port Description

Port 1 (6 Pin Jack)	
Pin	Description
1	RS485 + ve
2	NC
3	NC
4	NC
5	NC
6	RS485 -ve

Dimensions (All dimensions are in mm)



Ordering Information

Product Code	Description	Certification
DIGIX-4-1-1-24VDC	PLC – 10DI, 8RO & 24VDC – RTC and Modbus Expansion	CE RoHS in Process

Accessories (To be ordered separately)

Downloading Cable	AC-USB-RS485-03
Networking	ACH-004 (RJ25 Cable)
	AC-IOEXP-03 (Expansion Adapter)
	AC-USB-RS485-02 (USB to RS485 Cable)