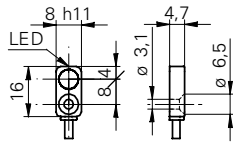


## Inductive proximity switch

IFFM 08P17A6/L

## dimension drawing



## general data

|                                |                     |
|--------------------------------|---------------------|
| mounting type                  | flush               |
| nominal sensing distance $S_n$ | 2 mm                |
| hysteresis                     | 2 ... 20 % of $S_r$ |
| output indicator               | LED red             |

## electrical data

|                                    |                        |
|------------------------------------|------------------------|
| switching frequency                | < 5 kHz                |
| voltage supply range +Vs           | 10 ... 30 VDC          |
| current consumption max. (no load) | 12 mA                  |
| output circuit                     | PNP make function (NO) |
| voltage drop $V_d$                 | < 2 VDC                |
| output current                     | < 100 mA               |
| short circuit protection           | yes                    |
| reverse polarity protection        | yes                    |

## mechanical data

|                         |                             |
|-------------------------|-----------------------------|
| type                    | rectangular                 |
| material (sensing face) | PBT                         |
| housing material        | die-cast zinc nickel plated |
| dimension               | 8 mm                        |
| housing length          | 16 mm                       |
| connection types        | cable, 2 m                  |

## ambient conditions

|                       |                |
|-----------------------|----------------|
| operating temperature | -25 ... +75 °C |
| protection class      | IP 67          |

## photo



## connection diagram



- extra flat housing
- through bore for M3 screw