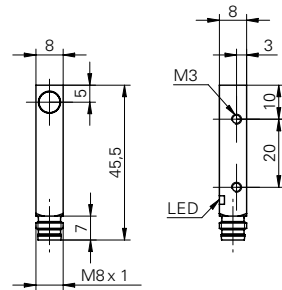


Inductive proximity switch

IFFM 08 (long)

sample drawing



general data

mounting type	shielded
nominal sensing distance S_n	2 mm
hysteresis	3 ... 20 % of S_r
output indicator	LED red

electrical data

switching frequency	< 5 kHz
voltage supply range +Vs	10 ... 30 VDC
current consumption max.	12 mA
voltage drop Vd	< 2 VDC
output current	< 200 mA
short circuit protection	yes
reverse polarity protection	yes

mechanical data

type	rectangular
material (sensing face)	PBT
housing material	brass nickel plated
dimension	8 mm

cable, 2 m

housing length	38,5 mm
----------------	---------

connector M8

housing length	45,5 mm
----------------	---------

ambient conditions

operating temperature	-25 ... +75 °C
protection class	IP 67

order reference	connection types	output circuit
IFFM 08N1701/O1L	cable, 2 m	NPN make function (NO)
IFFM 08N17A1/O1S35L	connector M8	NPN make function (NO)
IFFM 08N3701/O1L	cable, 2 m	NPN break function (NC)
IFFM 08N37A1/O1S35L	connector M8	NPN break function (NC)
IFFM 08P1701/O1L	cable, 2 m	PNP make function (NO)
IFFM 08P17A1/O1S35L	connector M8	PNP make function (NO)
IFFM 08P3701/O1L	cable, 2 m	PNP break function (NC)
IFFM 08P37A1/O1S35L	connector M8	PNP break function (NC)

sample picture

